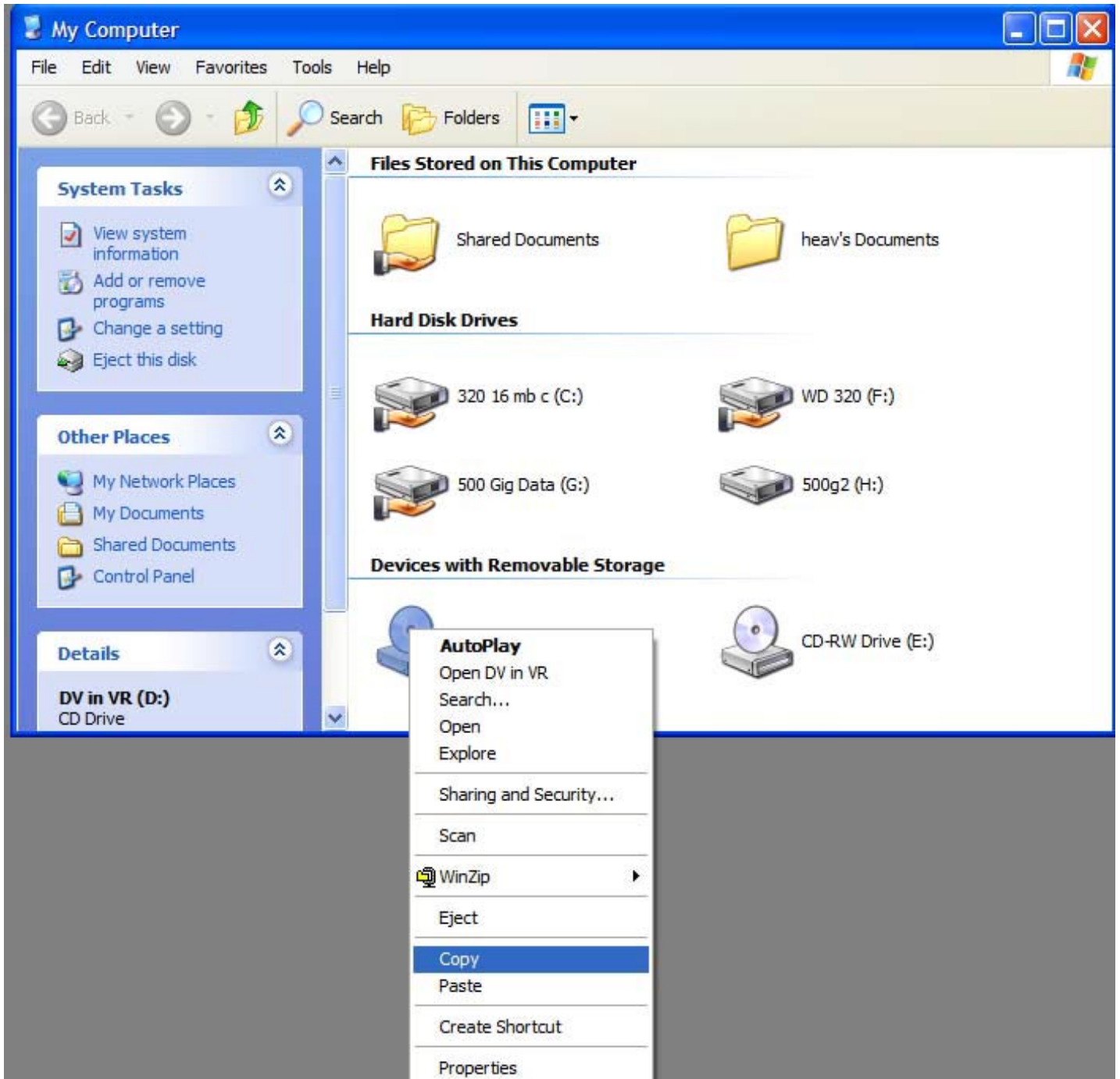


Setting Up the DVCD Engine

Step 1. Copy the CD to your computer's hard drive.

- a) Put the "Take Home Death Valley in Virtual Reality" CD in your computer's CD/DVD drive.
- b) Find DVCD in "My Computer" Your computer will look different from the one I used in this example, but the idea is the same.
- c) Right-click the CD



- d) Choose "Copy"

Now you will need to open your hard drive by double-clicking its icon in "My Computer." If you get a message that says something like "the files are hidden" choose "show these files."

When you get the window of the hard drive open on your desktop, right-click where you would like the folder for the Death Valley CD to appear and choose "New" and then when the second menu appears, choose "Folder" (see illustrations on the next page)

System Tasks

- Hide the contents of this drive
- Add or remove programs
- Search for files or folders

File and Folder Tasks

Other Places

Details

Documents and Settings

temp

AMD Dashbo...

hp LaserJet 1150 13...

readme.txt

uninstall.bat

View

Arrange Icons By Refresh

Paste

Paste Shortcut

Undo Copy Ctrl+Z

New

Properties

Folder

Shortcut

Flash ActionScript File

Briefcase

Bitmap Image

Microsoft Word Document

Flash Document

Microsoft Access Application

Microsoft PowerPoint Presentation

Adobe Photoshop Image

Text Document

Wave Sound

Microsoft Excel Worksheet

WinZip File

ewlett-Pa... Program Files Sierra Nevada System32

WU_Wizard 0x0409.ini 1033.mst All98.cab

fonts.cab

readme2.txt

oolbo~2...

Add or remove programs

Search for files or folders

File and Folder Tasks

Other Places

Details

temp webreg WINDOWS WU_Wizard 0x0409.ini 1033.mst All98.cab


AMD Dashbo... AMDPwrMon Crypt.dll cu_readme.rtf drv9x.cab file.diz fonts.cab

hp LaserJet 1150 13... hpbtpg.exe install.bat INSTALL.LOG instmsia.exe instmsiw.exe readme2.txt

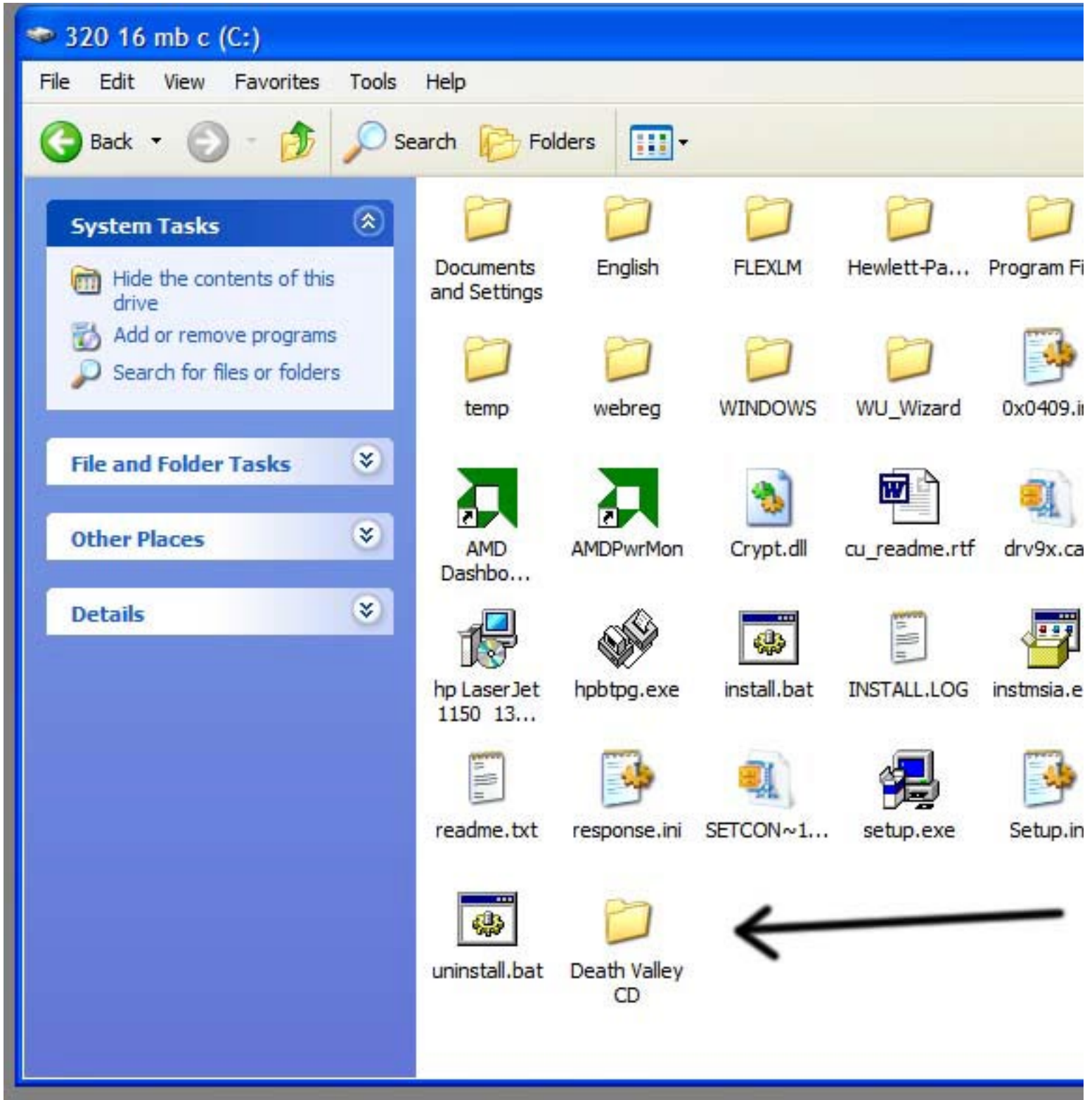
readme.txt response.ini SETCON~1... setup.exe Setup.ini TOOLBO~1... TOOLBO~2...

uninstall.bat

New Folder

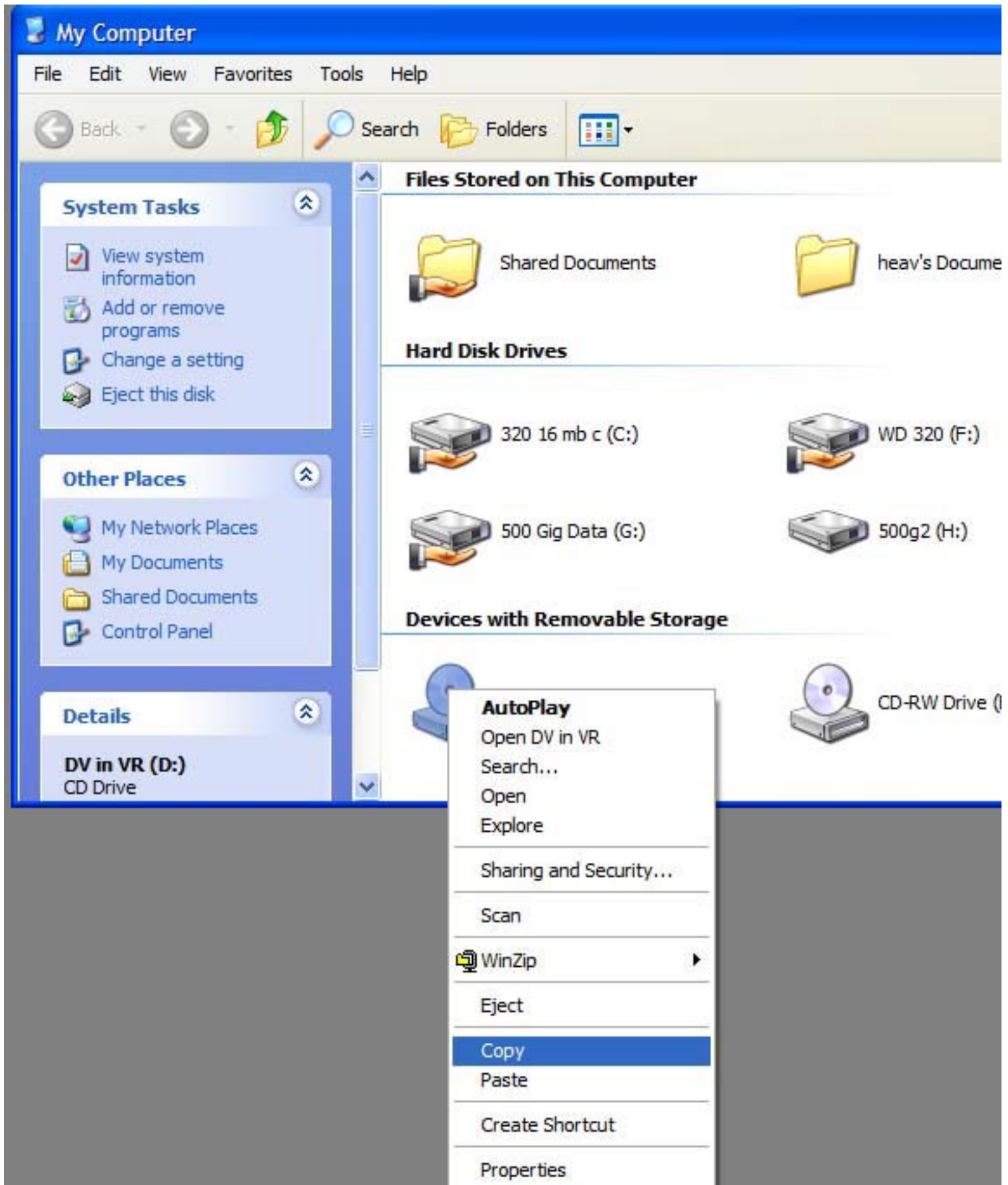


e) Now rename the folder. I used the name Death Valley CD in this example.



Now we will copy the DV in VR CD to the new folder we just created on your hard drive.

- a) Go to "My Computer"
- b) Right click "DV in VR," the Death Valley CD (see illustrations next page)

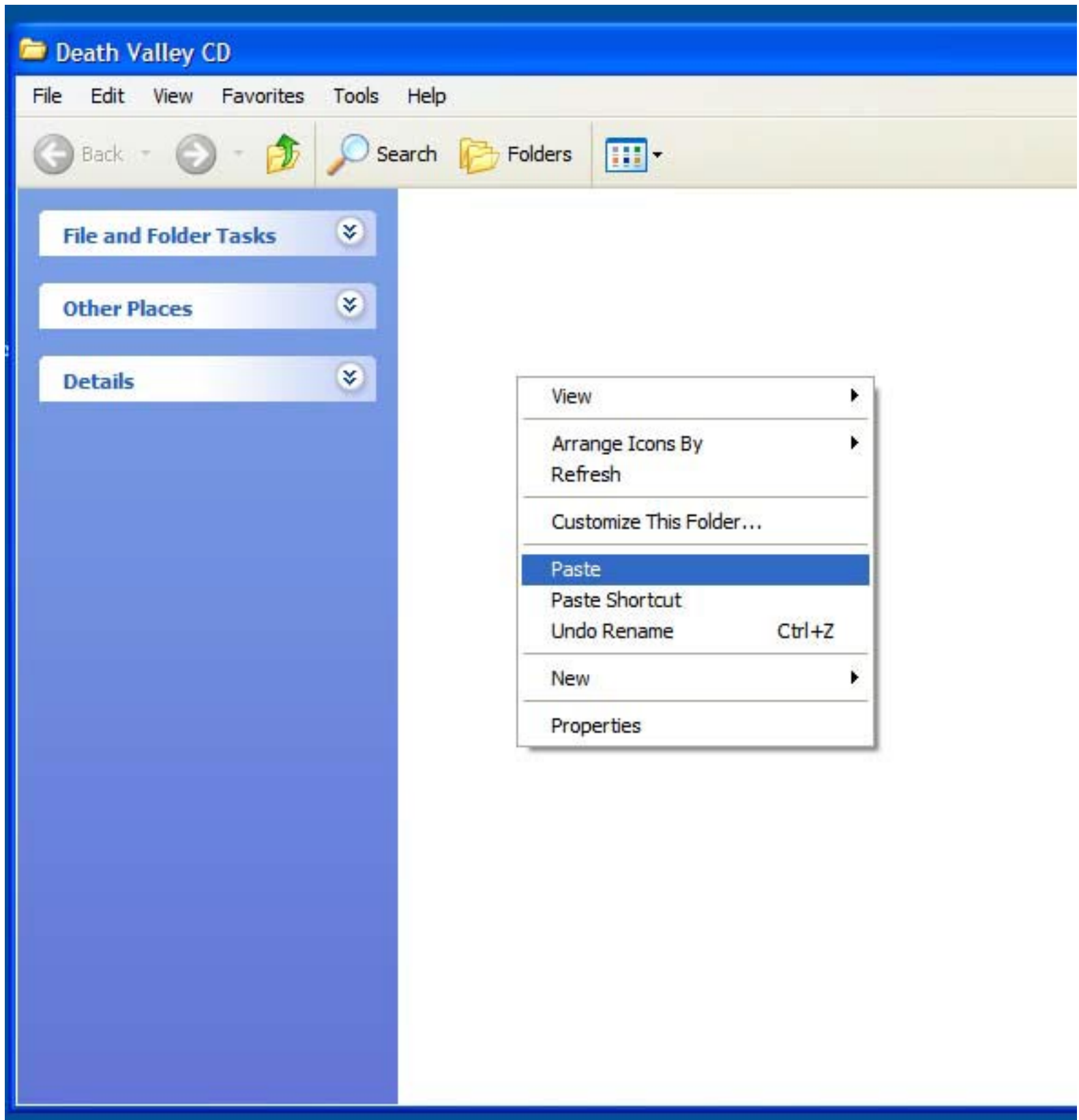


c) Choose "Copy"

d) Now navigate back to your hard drive to the folder named "Death Valley CD"

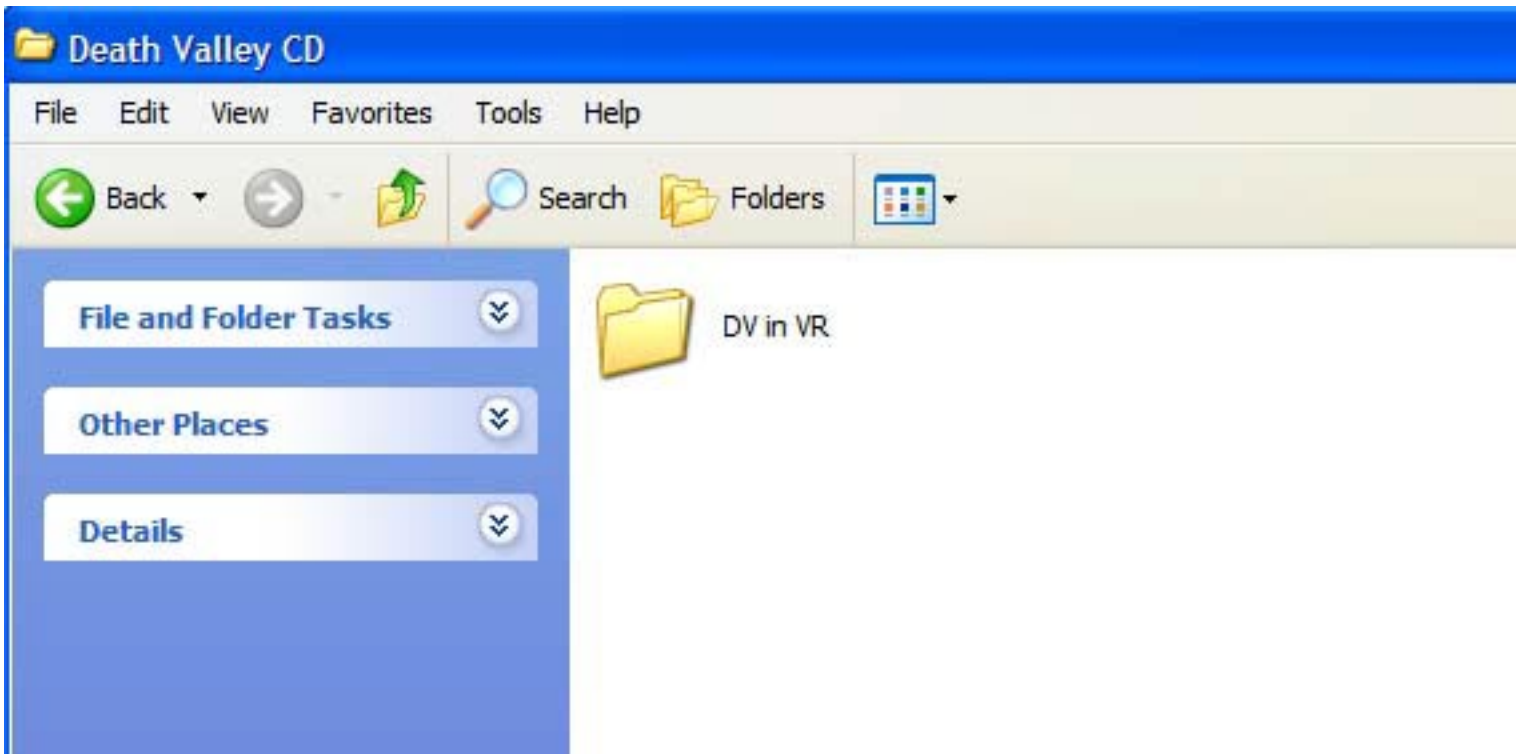
e) Double-click that folder to open it.

f) Right-click anywhere inside that folder and choose "Paste" You will see the "Copy Progress" window appear. It will take a few



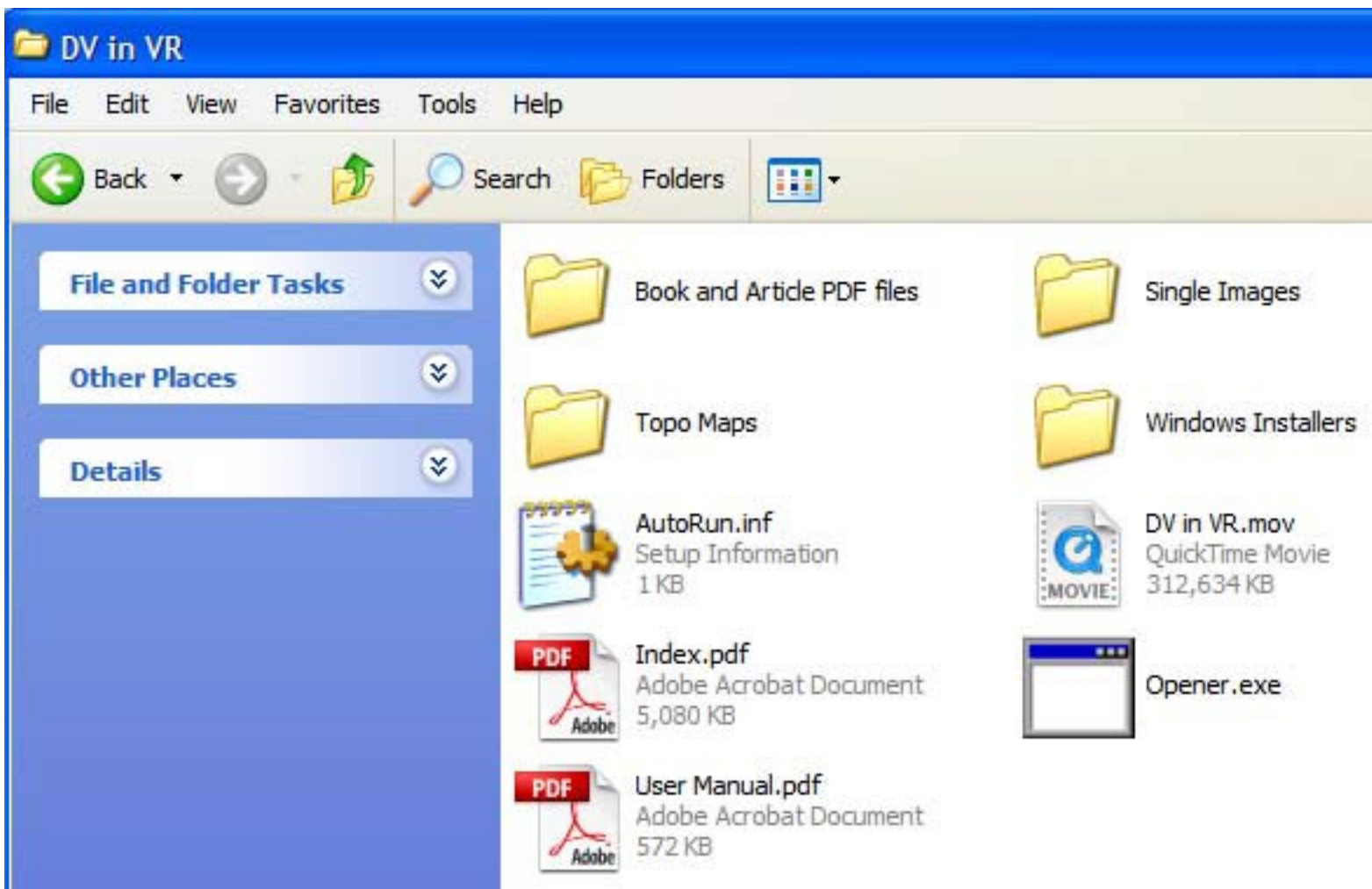
minutes, maybe as long as ten minutes for the files on the CD to copy to your hard drive.

When the files have copied, there will be a folder inside the Death Valley CD folder named "DV in VR." (see illustrations next page)



This new folder, DV in VR, should contain all the same files as are on the DV in VR CD, as shown below:

The next step is to copy the DVVR Engine to this folder which contains all the files from the Death Valley CD. The Engine has to be in the same folder with all these files so it can find them to make them go!



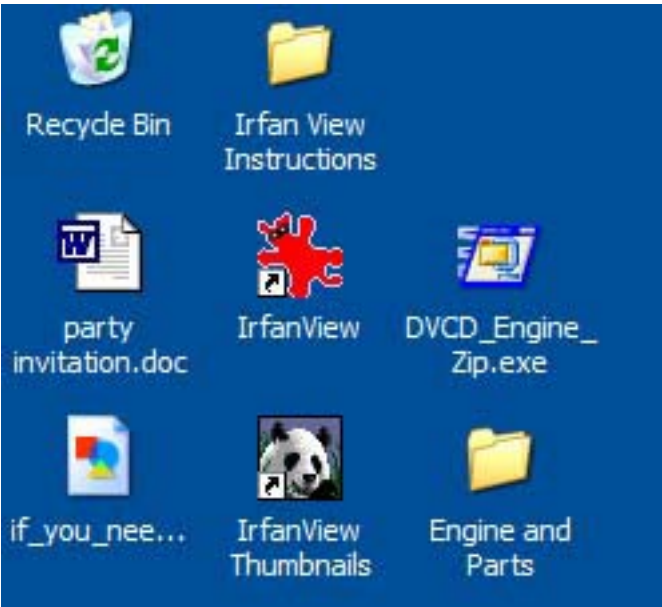
Here are the instructions for copying the DVCD Engine into the DV in VR folder:

a) Find the file you downloaded from the Inyo Pro site that contains the DVCD Engine. It will be named DVCD_Engine_Zip and depending on how you have your system set, it may be called DVCD_Engine_Zip.exe. On my system downloaded files appear on the Desktop, which is the default location with most browsers.

The file is located at: <http://inyopro.com/updates.html>

b) Double-click the file "DVCD_Engine_Zip.exe (Again, depending on how your System Preferences are set, the ".exe" may not be visible.)

c) After you double-click the DVCD_Engine_Zip.exe file, a folder will be extracted and appear on the Desktop. There are three items inside this folder, and they all must be placed into the DV in VR folder that contains all the files from the Death Valley CD.



d) Double-click the folder "Engine and Parts." When it opens you will see something like the image below. There are two files and one folder. They all must be placed into the DV in VR folder.

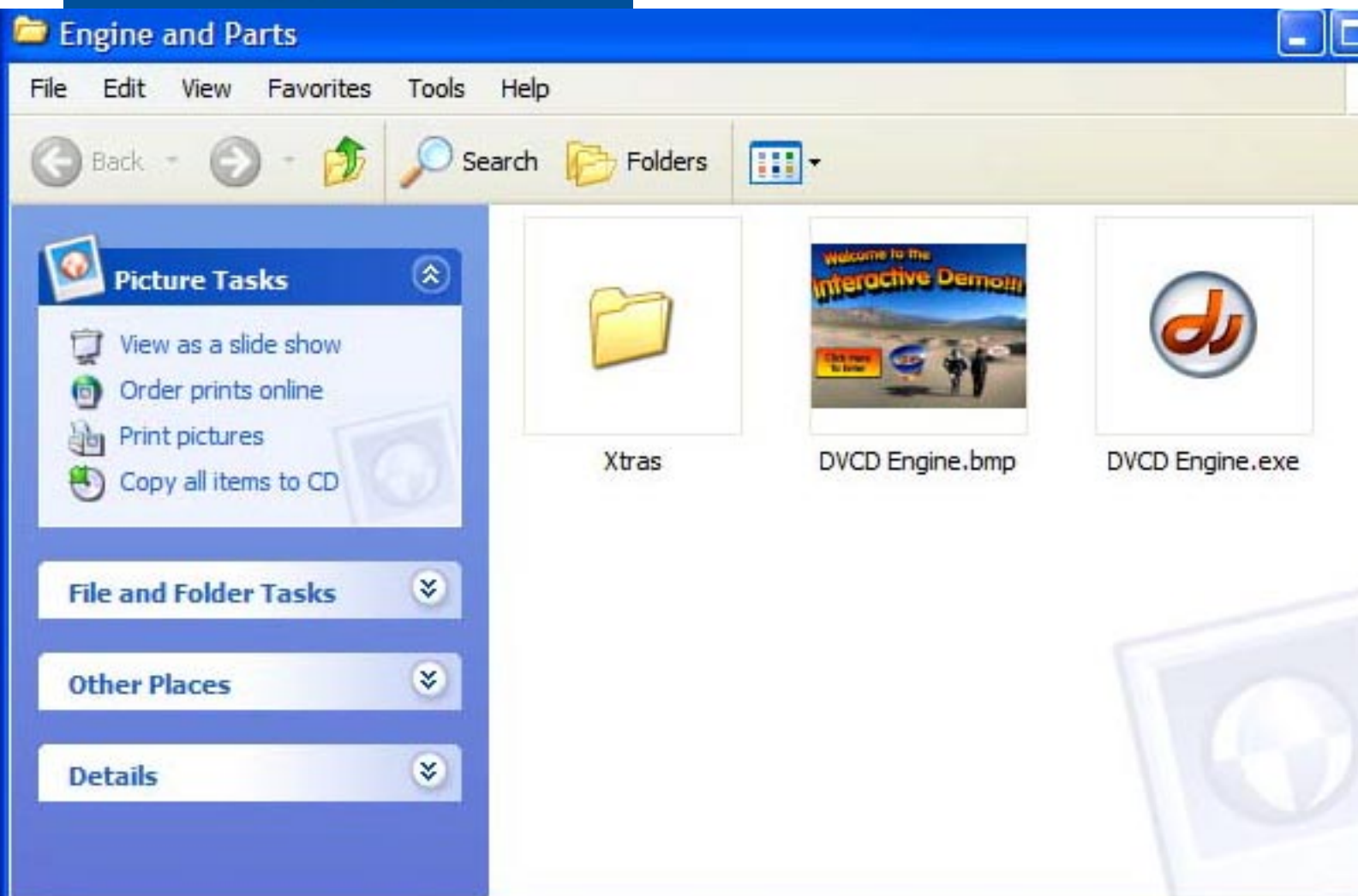
e) Select all three items.

d) After they are selected (indicated by a dark box around each one) Right-click over the selected area and choose copy.

e) Navigate to the DV in VR folder, open it, right-click inside the folder and choose "Paste."

That's it. You are finished. To make the Engine go, double-click the file DVCD Engine.

Remember, all the files must be in the same folder as shown on the next page.



DV in VR

File Edit View Favorites Tools Help

Back Search Folders

File and Folder Tasks

Other Places

Details

- Book and Article PDF files
- Topo Maps
- AutoRun.inf
Setup Information
1 KB
- Index.pdf
Adobe Acrobat Document
5,080 KB
- User Manual.pdf
Adobe Acrobat Document
572 KB
- Xtras
- Single Images
- Windows Installers
- DV in VR.mov
QuickTime Movie
312,634 KB
- Opener.exe
- DVCD Engine.exe
Macromedia Projector
Macromedia, Inc.
- DVCD Engine.bmp
1024 x 768
Bitmap Image

That should do it. If you have any questions please e-mail me at:

paul@inyopro.com

Thank you!

Paul Fretheim